



**NO RADIATION  
NON-INVASIVE  
NO BODY CONTACT**

**100% SAFE  
PAIN-FREE**

We strongly believe in providing safe alternatives for your health.



Advanced Thermography Specialists  
Midwest Region

## ***What is Advanced Thermography?***

Advanced Thermography provides high-sensitivity black and white images (as well as color) for earlier detection of the pre-cursors of cancer. We combine it with action steps, empowering self-care education and local health professional resources; all designed to detect current issues and support prevention of future diseases.

## ***How is it different from other scans?***

Advanced Thermography's black and white images are more beneficial in supporting the earlier detection and signs of risk. It enables men and women to observe and address sources of inflammation, assess estrogen stimulation in the breasts (a significant risk factor for breast cancer), and monitor effects of H.R.T.

## **CONTACT**



**913-934-5786**

[support@ats.preventivethermography.com](mailto:support@ats.preventivethermography.com)  
[ats.preventivethermography.com](http://ats.preventivethermography.com)



Check out more:  
[atsofmidwest.com](http://atsofmidwest.com)  
[linkt.ree/atsofmidwest](https://linkt.ree/atsofmidwest)



Check website for locations  
and to make an appointment.



Based in Hutchinson, KS  
Serving Wichita, Salina, Hays,  
Kansas City & surrounding areas  
throughout the midwest

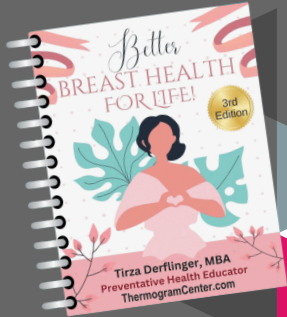
Empower  
Yourself

**FOR A  
HEALTHIER  
TOMORROW**

# SERVICES

- Breast, Body & Teeth Imaging
- Prevention Education
- Imaging with comprehensive reporting and action steps that include both color and black and white thermal findings
- Self-help resources
- For Men & Women
- Ideal for Women with: dense breasts, implants, who are nursing or pregnant, or using H.R.T.
- No Doctor Referral Needed

Plus a FREE download of the book  
*Better Breast Health - for Life!*



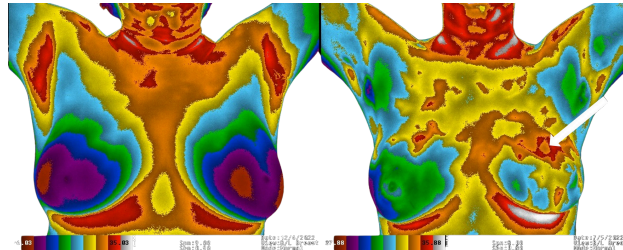
This client was already diagnosed with lung cancer. Note the hypervascularity commonly visible with some active organ cancers.

# PRICING

Learn about grants, insurance coverage, pricing and forms of payment accepted on the website.

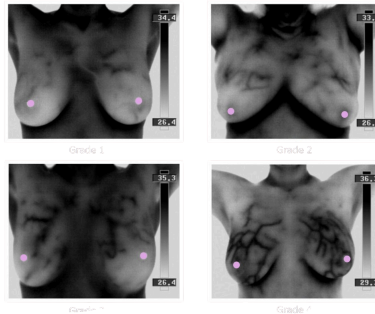
# BREAST, BODY & TEETH IMAGING

Abdomen, back and face imaging supports early detection and prevention by revealing sources of inflammation in the body that may be contributing to chronic inflammation, symptoms and (future) conditions. These sources of inflammation and “junk” can drain into the breasts, contributing to cancer risks.

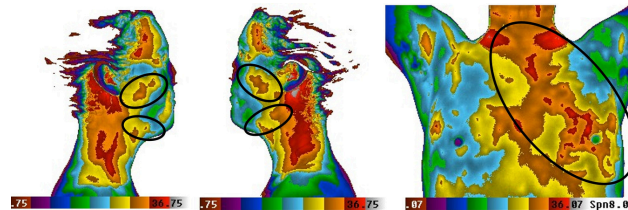


**Low vs High Thermobiological Risk**

The left image represents a low risk image, while the right represents the highest. This 33 year-old patient had a normal mammogram and ultrasound. The thermogram led to further evaluation and lumpectomy that revealed a 3mm cancer.



Excess estrogen stimulation is a significant factor for developing breast cancer. Our thermal imaging assesses this factor with a Hormonal Grade from 0-4, and the risk for breast cancer with a Thermobiological Risk Rating for each breast on a scale of 1-5.



Shocked by a diagnosis of left breast cancer, this woman sought out the source. Advanced Thermography imaging revealed dental/jawbone issues draining into the left breast.



**Giving  
You  
Choices**

# ASSESSMENT INCLUDES

**Education :** We discuss the likely causes of inflammation and risk seen in your images.

**Empowerment:** We provide action steps & resources to manage and reduce risk.

**Monitorization:** We monitor the results of your actions to help adjust accordingly.